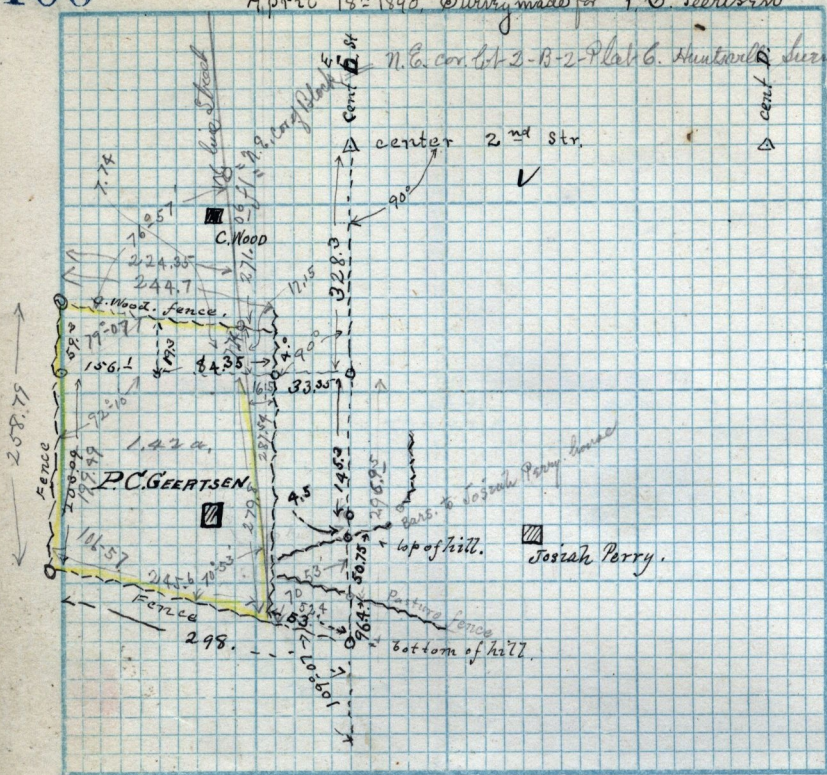


April 18th 1890. Survey made for P. G. Geertssen

N. E. cor. of 2-B-2-Plat 6. Huntwell's Survey.



Scale: Chains per inch.

Part of the Northeast and Northwest ^{3/4} S.E. quarter
 Sec. eight (8) in Twp. 6 N., R. 1 W. Salt Lake Mer. 2^d P.
 Beg. 30.90 ch. S of the N. E. cor. of N. Pl. quad. of said
 Sec. 8. and running thence S. 0^o 7' ch., thence S. 8^o
 7' 75" ch., thence N. 8.25 ch to place of beg.; also
 Beg. at the N. W. corner of the S. E. quad
 of said Sec. 8. and running thence S. 2.26 ch.,
 thence E. 9.69 ch, thence N. 2.26 ch, thence N. 9.69 ch
 to place of beg. also Beg. @ S. W. cor. of N. E. quad
 of Sec. 8. and run. thence E. 27.58 ch, thence
 41 ³/₄ N. 14.19 ch, thence N. 24^o 21' N. 8.54 ch, thence
 S. 61 ³/₄ N. 17 ch, thence S. 9.59 ch. to place of beg.